



John Ewing Jr.
Mayor, City of Omaha



Robert G. Stubbe, P.E.
Public Works Director

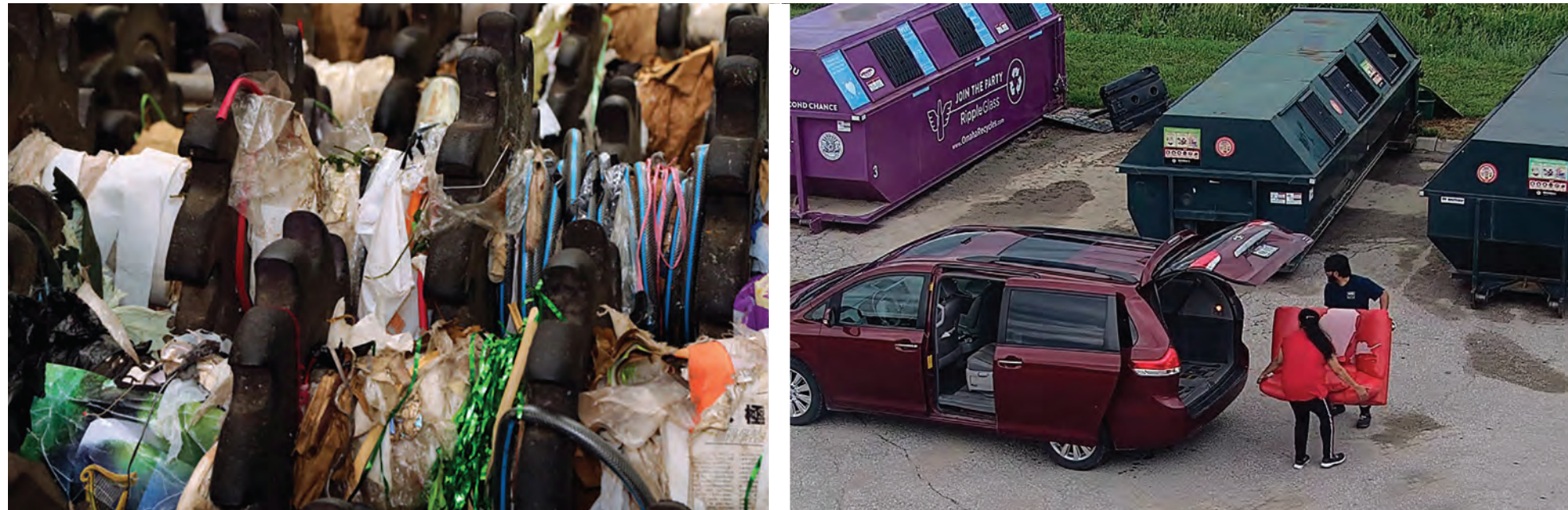
Fall Cleanup: Saturdays in Oct. | Fall Yardwaste: Oct 27-Dec 5

WASTE

YARDWASTE

RECYCLING

GLASS



Tanglers jam sorting equipment.

Illegal dumping at recycling sites.

Contamination Drives Up Collection Costs

When materials end up in the wrong collection cart or drop-off site, it costs the City—both in dollars and damage. Improper recycling and waste disposal lead to higher processing fees and can even break equipment.

For years, the City has encouraged residents to “Recycle Right”—that means only placing approved, clean recyclables in your cart. Unfortunately, many still “wishcycle,” tossing in items they hope are

recyclable but aren’t. This includes everything from plastic utensils to garden hoses and even baby diapers.

A recent analysis showed that more than 16% of the material sent to First Star Recycling, our recycling processor, were non-recyclable. This contamination raises the City’s cost for every ton of recycling. Despite ongoing education, we continue to see items like plastic bags, Christmas lights, rope, and string—known as “tanglers”—which jam sorting equipment and force shutdowns for maintenance. Even worse, electronics and batteries have caused fires during sorting. While First Star Recycling has avoided major damage, other communities have seen entire recycling operations shut down for months due to these preventable fires.

Contamination isn’t limited to curbside recycling. Omaha’s recycling drop-off sites are also abused. When non-recyclable materials—or even valid recyclables—are left outside the containers, it’s not just careless; it’s illegal dumping. This kind of

misuse has made it increasingly difficult to find new host locations for drop-off sites, which is why the City has yet to secure a new central site.



Oma-Gro composting facility routinely deals with non-compostable items like garden hoses and fencing.

Yardwaste is another area where contamination is a growing problem. Yardwaste should only include natural materials like grass, leaves, small branches, and garden trimmings. Yet at the Oma-Gro composting facility, staff routinely find items such as aluminum cans, grocery bags, motor oil filters, garden hoses, and even chain-link fencing. These materials not only damage equipment and halt operations, but they also degrade the final compost product.

No matter what type of waste you’re disposing of—recycling, yardwaste, or garbage—please take a moment to make sure you’re doing it right. A little care on your part makes a big difference for the entire community.

Omaha Recycling Composition Audit Results	
Corrugated Cardboard (OCC)	37.95%
Residential Mixed Paper*	27.68%
Plastics 1, 2, 3, & 5	13.09%
Aluminum Cans	2.56%
Hefty ReNew Bags	0.39%
Steel Cans	1.73%
Residual (non-recyclable garbage)	16.60%
*Includes newspaper	

PRESORTED
STANDARD
US POSTAGE
PAID
PERMIT NO. 1086
OMAHA, NE

WASTELINE | OMAHA PUBLIC WORKS
ENVIRONMENTAL QUALITY DIVISION
5600 SOUTH 10TH STREET
OMAHA, NE 68107-3501



Omaha Fall Cleanup Returns This October: Free Disposal for Bulky Items

Do you have old furniture, mattresses, or leftover materials from a summer project? Omaha’s Fall Cleanup Program is your chance to get rid of those large, bulky household items — for free!

Cleanup Dates:

The 2025 Fall Cleanup will take place on all four Saturdays in October, with collection sites open from **9:00 a.m. to 2:00 p.m.** each day.

Who Can Participate?

Everyone is welcome—you don’t need to be part of a neighborhood association to take part in the cleanup. Just bring your items to any designated site during the operating hours.

Neighborhood Association Registration Begins July 30

Neighborhood groups interested in hosting a collection site must register starting **July 30**. Neighborhood Associations must be registered with the Omaha Planning Department in order to get an email inviting them to be a site sponsor.

What You Can Drop Off:

Items accepted include mattresses, old furniture, carpeting, construction material. Select locations also accept tires (*off the rims*), appliances, metal items such as bikes, grills, and swing sets (*for recycling*)

Yardwaste Drop-Off:

Leaves, brush, and other yardwaste can be taken to **Oma-Gro at 6606 S. 60th Street**, which will be open on cleanup Saturdays.

Things to Know Before You Go:

Be prepared to **unload your own vehicle** — bring a friend if you need help. Some neighborhood associations may **reuse or sell items** to raise funds for community projects.

Items NOT Accepted:

Please do not bring the following:

- Commercial or business waste
- Rocks, concrete, dirt
- Tree trunks, large logs, or stumps
- Railroad tie timbers
- Dead animals, manure, or animal bedding
- Tires still mounted on rims
- Hazardous materials (**UnderTheSink** will be open for these items.)

Get More Info:

As October approaches, visit cleanup.wasteline.org for a full list of drop-off sites and an interactive map. Let’s work together to keep Omaha beautiful!

Recycle Your Cups, Lids, and Straws



Omaha Residents: You Can Now Recycle Disposable Cups!

Do you start your day with a coffee to go? Grab lunch on the run? Rely on a Big Gulp or Slurpee to get through the afternoon? If so, you’re not alone — and part of a growing challenge involving disposable cups.

Every year, more than **600 billion** disposable coffee cups are used worldwide — that’s about **1.3 million cups every minute**. In the United States alone, more than **120 billion cups** are thrown away each year, most of which end up in landfills instead of being recycled.

But there’s good news for Omaha residents: **you can now recycle many disposable cups** right into your **green lid** recycle cart!

What You Can Recycle:

- **Clean paper cups** (like coffee cups or cold take out cups)
- **Hard plastic cups** (for cold drinks)

What You Can’t Recycle (at least not as easily):

- **Styrofoam cups**
- **Plastic lids and straws**

To recycle, these items must go in an **orange Hefty ReNew® bag**. Otherwise please put them in your regular trash. To help you keep it all straight, here’s a simple reference chart. Consider clipping it out and posting it on your fridge or community bulletin board.

Let’s work together to keep Omaha clean and green. **Start recycling your cups today — and spread the word!**

Omaha Collection Numbers						
2024	Recycle		Waste		Yardwaste	
January	1,784.45	15%	10,289.01	85%	99.50	1%
February	1,758.09	15%	9,852.76	85%	—	0%
March	1,726.72	15%	10,095.22	85%	—	0%
April	1,893.46	13%	12,396.05	87%	14.75	0%
May	2,272.04	12%	15,646.92	81%	1,325.80	7%
June	2,079.69	14%	12,925.35	84%	371.10	2%
July	2,453.35	15%	14,050.25	85%	—	0%
August	2,187.04	14%	12,911.02	86%	—	0%
September	1,847.70	15%	10,630.98	85%	—	0%
October	2,025.58	14%	12,153.19	83%	414.52	3%
November	1,852.01	11%	11,892.61	73%	2,621.26	16%
December	1,983.50	14%	11,680.70	84%	175.04	1%
Total 2024	23,863.63	14%	144,523.97	83%	5,021.97	4%
2023	22,350.47	13%	140,976.99	83%	5,529.41	3%
2022	22,701.66	14%	137,284.61	83%	5,812.53	4%
2021	24,899.21	14%	144,953.31	82%	5,923.81	3%



Illegal dumping, including placing recyclables on the ground outside containers at drop-off sites, is punishable by a fine of up to \$500, loss of drivers license for 6 months and all clean up costs. [Omaha Municipal Code, Chapter 34, ARTICLE I, Section 4.]

Full Service Drop-off Sites

The full service sites accept all of the recyclables that are collected from Omaha’s curbside program. Plus, there is a purple container for glass bottles.



WEST DROP-OFF SITE

Parking Lot
20801 Elkhorn Drive
The site is open: Daily: 7AM – 7PM



NORTHWEST DROP-OFF SITE

Mulhall’s
3615 North 120th Street
(120th & Maple)
The site is open: Daily: 7AM – 7PM



NORTHEAST DROP-OFF SITE

Creighton University
Burt Street between 29th & 30th Street
(West of the former Creighton Dental College Building)
The site is open:
Daily: 7:30AM – 6PM (Sept. – March)
Daily: 7:30AM – 8PM (April – Aug.)



SOUTHEAST DROP-OFF SITE

River City Transfer
6404 South 60th Street
(between Q and Harrison)
NOTE: This site accepts recyclables free and is a dump location for bulky items. There is a fee for all materials except recyclables.
The site is open:
Monday through Friday: 6AM – 4PM
Saturday (Easter to Thanksgiving)
Hours: 6AM – 1PM
Saturday (Thanksgiving to Easter)
Hours: 7AM – 11:30AM



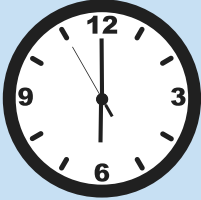
SOUTHWEST DROP-OFF SITE

First Star Recycling
10330 ‘I’ Street
Use the East driveway to First Star Recycling.
The site is open: Daily: 7AM – 7PM



Special Assistance

Special collection for garbage, yardwaste, and recyclables is available. Households where all occupants of the home have a medical disability, or are at least age 70, qualify for the service. It can take several weeks to get the service set up. To apply, call **402-444-5238** from 8am to 8pm weekdays.



Set out by 6AM

- Carts must be removed from the curb by 10AM the day after collection.**
- Keep carts separate from each other, and other objects (mailboxes, light poles, etc).
 - Only material in your cart will be collected.
 - Keep lids closed during storage and collection.
 - Excess yardwaste must be in paper yardwaste bags with a paid sticker.



Glass Only Drop-off Sites



FAR WEST CENTRAL
HyVee
1000 S 178th Street (180th & Pacific)
The site is open: 7AM – 7PM



WEST CENTRAL
Westwood Plaza
12075 West Center Road (Near Taco Bell)
The site is open: 7AM – 7PM



Big Family? No Problem!

If you have a big family and generate too much garbage or recyclables to fit into the pair of 96-gallon carts, don’t worry! **A household of 5 or more members qualifies for an additional cart at the City’s expense.** You can choose an extra waste cart or a recycling cart. Just complete the registration form which is available at **wasteline.org** or call **402-444-5238** to have the form mailed to you.

For all other situations, FCC Environmental Services will lease an additional cart for an annual fee. You must pay in advance, and the fee includes delivery. The information for leasing a cart is available at **wasteline.org**.

Thank You For Recycling These: Gracias por reciclar estos materiales:



Paper
(all colors and types)
Papel
(de todo color y tipo)



Cardboard
(flatten)
Cartón
(desarmado)



Food Cartons and Cups
(empty and clean)
Cartones de comida y tazas
(vacíos y limpios)



Aluminum and Steel Cans
(empty and clean)
Latas de aluminio y acero
(vacías y limpios)



Plastic Bottles, Jars, Jugs, and Cups
(empty and clean)
Botellas de plástico, tarros, Jarras y tazas
(vacíos y limpios)

Not in your green lid cart. ¡NO! En la carretilla de tapa verde

NO Yardwaste
(goes in your black lid cart)
Nada de desperdicios de jardín
(póngalos en la carretilla de tapa negra)

NO Glass
(take to recycling drop-off location)
Nada de vidrio
(llévalo a un puesto de reciclar vidrio)

NO Plastic Bags or Plastic Wrap
(return to retailer)
Ninguna bolsa ni envoltura de plástico
(devuélvalas a la tienda)

Do not Bag Recyclables
(recyclables must be loose in cart)
No ponga en bolsas los reciclables
(los reciclables tienen que estar sueltos en la carretilla)

NO Tangles
(no hoses, wires, chains, or electronics)
Nada enredante
(ni mangueras, alambres o cadenas, ni cables electrónicos)

NO Food or Liquid
(empty and rinse all containers)
Nada de comida ni líquidos
(vacíe todos los recipientes y enjuáguelos)

Personalize Your Wasteline Calendar

To create your personalized collection calendar, visit Wasteline.org/calendar. Enter your address, click on "Get a Calendar," and follow the prompts. The printable calendar includes your trash and recycling collection days, as well as information on yardwaste collection and neighborhood cleanups.

If you prefer using a smartphone, you can download the "Wasteline Omaha" app. This app provides push notifications to keep you updated.



When In Doubt Leave It Out Not Everything Is Recyclable

Markets have dramatically changed, and are not tolerant of contamination. Do not bag recyclables. Complex plastic items such as child safety seats go in the black lid waste cart. Things other than containers are not recyclable.



DO NOT place any of the following items in your recycle bin.
DO NOT bag recyclables.



FOOD & TRASH



PLASTIC BAGS



ELECTRONICS



FOAM
CONTAINERS



SCRAP METAL



DIAPERS



HOSES



BATTERIES



CORDS



WIRE HANGER



SHARPS



CAR PARTS

Legal Notice: Placement of solid waste (garbage, recyclable materials, and yardwaste) by a resident along a privately owned street or road implies permission for the City's solid waste collection contractor to drive onto that street or road to perform contract work. Accordingly, such residents and owners of private streets and roads shall assume the risk of incidental damages incurred in the course of performing work while driving on the surface of these private streets and roads. Incidental damages may include cracks in the surface of the roadway or cave-ins due to collapsed sewers or poor street surface substrate. The City's contractor is not exempt from causal damages to personal property or premises adjoining private streets and roads. Please call the Solid Waste Hotline 402-444-5238 for questions or concerns about collection on private streets and roads.